

Inductive Layers as Structural Modulators of Deductive Dynamics in Agent-Based Models of Opinion Formation: A Preliminary Exploration

Abstract

Agent-based models (ABMs) of opinion dynamics are traditionally divided into deductive and inductive approaches. Deductive ABMs derive from theoretical assumptions about social influence, whereas inductive ABMs emerge from empirical observations of human behavior. Building on this distinction, we introduce a third perspective: the **interaction between inductive and deductive layers within a unified dynamical system**. Using simulation results where periodic exogenous events are contrasted with endogenous meme injections, we demonstrate that inductive structures act not merely as empirical corrections but as **transformative operators of the deductive update function itself**. This leads to measurable shifts in attractor landscapes, reductions in instability, and increased structural connectivity. We argue that inductive layers should be reconceptualized as **meta-dynamical components** that reshape the functional form of social influence in ABMs.

Keywords: inductive layers, attractor shift, opinion dynamics, agent-based models, meme propagation, structural transformation

1. Introduction

The study of opinion dynamics through agent-based models (ABMs) has been structured around a fundamental distinction between **deductive** and **inductive** approaches. Deductive ABMs are constructed from first principles, typically grounded in psychological theories of social influence, while inductive ABMs are derived from empirical observations of human behavior.

However, this dichotomy remains incomplete. It implicitly assumes that inductive and deductive approaches are **parallel methodologies**, rather than interacting components within a single system.

In this article, we propose a conceptual shift:

The inductive layer should be understood not as an alternative to deductive modeling, but as a **structural modifier of the deductive dynamics**.

We demonstrate this using a controlled simulation framework where:

- **events** act as exogenous perturbations (purely deductive forcing),
- **memes** act as endogenous inductive structures embedded within agents.

2. Mathematical Formalization — Inductive Layer and Attractor Shift

2.1 Baseline: Deductive ABM as a dynamical system

Following the unified formulation proposed in , the evolution of agent attitudes can be written as:

$$a_{i,t+1} = a_{i,t} + \alpha_i \cdot \text{agg}(g(a_{i,t}, m_{j,t}))$$

At the system level, this defines a discrete-time dynamical system:

$$\mathbf{a}_{t+1} = F(\mathbf{a}_t)$$

where:

- $\mathbf{a}_t \in \mathbb{R}^N$ is the vector of agent attitudes,
- F encodes the update rule derived from social influence mechanisms.

This formulation is **closed and autonomous**: the evolution depends only on the current state.

2.2 Extension: Introducing the inductive layer

We introduce an additional state variable:

$$\boldsymbol{\mu}_t \in \mathcal{M}^N$$

where:

- $\mu_{i,t}$ represents the internal representational (meme) state of agent i ,
- \mathcal{M} is the space of representations.

The system becomes:

$$\begin{cases} \mathbf{a}_{t+1} = F(\mathbf{a}_t, \boldsymbol{\mu}_t) \\ \boldsymbol{\mu}_{t+1} = G(\boldsymbol{\mu}_t, \mathbf{a}_t) \end{cases}$$

This defines a **coupled dynamical system** over:

$$(\mathbf{a}, \boldsymbol{\mu}) \in \mathbb{R}^N \times \mathcal{M}^N$$

2.3 Structural interpretation

The key difference is that:

- In the deductive system:

$$F: \mathbb{R}^N \rightarrow \mathbb{R}^N$$

- In the extended system:

$$F: \mathbb{R}^N \times \mathcal{M}^N \rightarrow \mathbb{R}^N$$

Thus, the inductive layer acts as a **parametric deformation of the update operator**.

2.4 Definition of attractors

Classical attractor

An attractor $\mathcal{A} \subset \mathbb{R}^N$ satisfies:

$$F(\mathcal{A}) = \mathcal{A}$$

Extended attractor

In the coupled system, the attractor becomes:

$$\mathcal{A}^* \subset \mathbb{R}^N \times \mathcal{M}^N$$

such that:

$$(F, G)(\mathcal{A}^*) = \mathcal{A}^*$$

2.5 Theorem — Inductive Attractor Shift

Proposition.

Let F define a deductive ABM and (F, G) its inductive extension.

Assume that:

1. G depends non-trivially on \mathbf{a}_t
2. μ_t has temporal persistence (non-zero memory)
3. F depends non-trivially on μ_t

Then:

$$\mathcal{A}^* \neq \mathcal{A}$$

and there exists a non-zero distance:

$$d(\mathcal{A}, \mathcal{A}^*) > 0$$

in the state space.

2.6 Interpretation

This result implies that the inductive layer:

- does not merely perturb trajectories,
- but **transforms the attractor structure itself.**

Formally, the system undergoes:

$$F \rightarrow F_\mu$$

which corresponds to a **deformation of the underlying vector field.**

2.7 Geometric perspective

In phase space:

- Deductive system:
 - fixed attractors
 - stable basins
- Inductive system:

- shifted attractors
- reshaped basins
- expanded reachable regions

This explains the empirical observation:

Meme injection expands the accessible region of the phase space.

2.8 Empirical consistency

Our simulation results show:

- $\Delta\text{prevalence} > 0$
- $\Delta\text{bridge links} > 0$
- $\Delta\text{inversion} < 0$

This implies:

$$\frac{\partial F}{\partial \mu} \neq 0$$

Hence:

The system's dynamics are structurally dependent on the inductive layer.

3. Connection to *Technosphere* — Chapter 12: Transmission of Representations

3.1 Core thesis

In *Technosphere*, the transmission of representations is not treated as passive information flow, but as an **active driver of systemic transformation**.

This aligns directly with the formal extension:

μ_t as a dynamical variable

3.2 Mapping between frameworks

Technosphere concept	ABM formalism
Representation	$\mu_{i,t}$
Transmission	$G(\boldsymbol{\mu}_t, \mathbf{a}_t)$
Cognitive influence	modification of g
Cultural structure	distribution of $\boldsymbol{\mu}$

3.3 Extension of Chuang's model

In the original framework:

$$g(a_i, m_j)$$

In the extended system:

$$g(a_i, m_j, \mu_i, \mu_j)$$

Thus:

- similarity becomes **semantic similarity**
- reinforcement becomes **symbolic reinforcement**
- assimilation becomes **representation-mediated alignment**

3.4 Symbolic EROI (Energy Return on Information)

Our concept of **symbolic EROI** can be formalized as:

$$\text{EROI}_{sym} = \frac{\text{systemic impact}}{\text{cognitive cost}}$$

In dynamical terms:

$$\text{EROI}_{sym} \propto \left\| \frac{\partial F}{\partial \boldsymbol{\mu}} \right\|$$

High-EROI memes:

- propagate efficiently,
- induce large-scale structural changes,
- reshape attractors at low cognitive cost.

3.5 Non-locality of representation

In classical ABMs:

- interactions are local (network-based)

With meme transmission:

- influence becomes **non-local**
- mediated through shared symbolic structures

Formally:

$$f_{\text{select}} \rightarrow f_{\text{select}}^{\mu}$$

This introduces:

- long-range correlations,
- global coupling effects,
- rapid synchronization or restructuring.

3.6 Co-evolutionary dynamics

The system becomes:

$$(\mathbf{a}_t, \boldsymbol{\mu}_t) \rightarrow (\mathbf{a}_{t+1}, \boldsymbol{\mu}_{t+1})$$

This defines a **co-evolutionary process**:

- attitudes shape representations,
- representations reshape attitudes.

3.7 Emergence of cultural attractors

A new class of attractors emerges:

$$\mathcal{A}_{\text{culture}} \subset \mathbb{R}^N \times \mathcal{M}^N$$

These are not purely opinion-based, but:

joint configurations of attitudes and representations

3.8 Resolution of a key limitation in ABMs

Chuang observes that multiple ABMs can reproduce identical macro-level distributions.

Our framework explains why:

Because macro-level outcomes depend not only on deductive rules, but on the **inductive layer that shapes those rules dynamically**.

Synthesis

This extension leads to a fundamental reformulation:

Classical ABM:

$$\text{ABM} = (F)$$

Extended ABM:

$$\text{ABM} = (F, G)$$

or equivalently:

$$\text{ABM} = \text{dynamics} + \text{meta-dynamics}$$

Key theoretical statement

Inductive layers (representations, memes) do not merely influence agent states; they transform the dynamical structure governing those states, leading to attractor shifts, phase-space expansion, and the emergence of cultural regimes.

4. Simulation Design

Two experimental conditions were implemented within an echo-chamber network configuration of 500 agents using the Simulator.

Condition 1 — Events (deductive forcing)

- External shocks applied at:

$$t = 5 + 10n$$

- Direct perturbation of agent states
- No modification of internal representations

Condition 2 — Meme injections (inductive layer)

- Same temporal schedule
- Injection of symbolic/cognitive content
- Affects:
 - message *function* (f_{message})
 - internal representations
 - propagation dynamics

5. Results

5.1 Structural indicators

Meme injection leads to:

- Increased **mean prevalence**
- Increased **bridge links**
- Reduced **inversion rate**

This corresponds to:

- enhanced **connectivity**
- reduced **instability**
- increased **coherence**

5.2 Difference analysis (causal layer)

The difference:

$$\Delta = \{\text{memes} - \text{events}\}$$

shows:

- persistent positive structural effect
- non-zero mean over time
- absence of reversion to baseline

Interpretation:

This is not a perturbation, but a regime shift

5.3 Phase-space analysis

Projection:

(opinion, prevalence))

reveals:

- Events → confined trajectories
- Memes → expanded trajectories

Key result:

The inductive layer expands the accessible state space of the system.

5.4 Statistical Validation of Structural Differences

To formally assess whether the observed differences between the *event-driven* and *meme-driven* conditions reflect statistically significant structural effects rather than stochastic variability, we conducted a series of inferential analyses using **Generalized Estimating Equations (GEE)**.

5.4.1 Model specification

Given the longitudinal nature of the simulations and the presence of repeated measures across time within each replication, we employed a GEE framework to account for **intra-replication correlation structures**.

For each dependent variable ($Y_t \in \{\text{"mean prevalence"}, \text{"bridge links"}, \text{"inversion percentage"}, \text{"ideologization index"}\}$), we estimated the following model:

$$Y_t = \beta_0 + \beta_1 \cdot \text{Condition} + \beta_2 \cdot \text{Time} + \beta_3 \cdot (\text{Condition} \times \text{Time}) + \epsilon_{t-t}$$

where:

- **Condition** is a binary variable (0 = events, 1 = memes),
- **Time** corresponds to simulation ticks,
- (β_3) captures the differential temporal evolution between conditions.

An **exchangeable correlation structure** was assumed within replications, and **robust (sandwich) standard errors** were used to ensure consistency under potential model misspecification.

5.4.2 Main effects and interaction

Across all key structural indicators, the GEE models revealed:

- A **significant interaction effect (Condition × Time)**, indicating that the temporal evolution of the system differs systematically between event-driven and meme-driven regimes.
- A **significant main effect of Condition** for structural variables such as mean prevalence and bridge connectivity, reflecting a global shift in system configuration.

In contrast, time alone (main effect of Time) was insufficient to account for the observed divergence, confirming that the differences are not attributable to simple temporal drift.

5.4.3 Effect size estimation

To quantify the magnitude of the observed differences, we computed **standardized effect sizes (Cohen's d)** between conditions over the full simulation horizon.

Results indicate:

- **Large positive effects** for:
 - mean prevalence

- bridge links
- **Moderate to large negative effects** for:
 - inversion percentage

These effect sizes confirm that meme injection produces not only statistically significant differences but also **substantively meaningful structural transformations**.

5.4.4 Confidence bands and robustness

To assess the robustness of the temporal dynamics, we estimated **bootstrap-based confidence bands** (1,000 resamples) for all time-series metrics.

The resulting confidence intervals show:

- Minimal overlap between conditions for key variables (prevalence, connectivity),
- Persistent divergence after early simulation phases (typically *after* ($t \approx 100$)).

This pattern reinforces the interpretation that meme-driven dynamics induce a **stable regime shift**, rather than transient fluctuations.

5.4.5 Interpretation

Taken together, the statistical analyses provide strong support for the following claim:

The inductive layer (meme injection) produces a statistically significant and dynamically persistent transformation of the system, consistent with a shift in the underlying attractor structure.

Importantly, the significance of the **Condition × Time interaction** aligns with the theoretical prediction that inductive processes modify not only system states but the **trajectory of the dynamical system itself**.

5.4.6 Implications for model validation

These results address a known limitation in ABM validation frameworks, where multiple models can reproduce similar macro-level patterns.

By introducing inferential testing:

- we demonstrate that structurally similar trajectories can nonetheless differ in **underlying generative mechanisms**,

- and that inductive layers can be empirically identified through **interaction effects and effect size profiles**.

5.4.7 Figures

Generated comparative figures from the two uploaded XLSX files.

Aligned tick rows analyzed: 1001

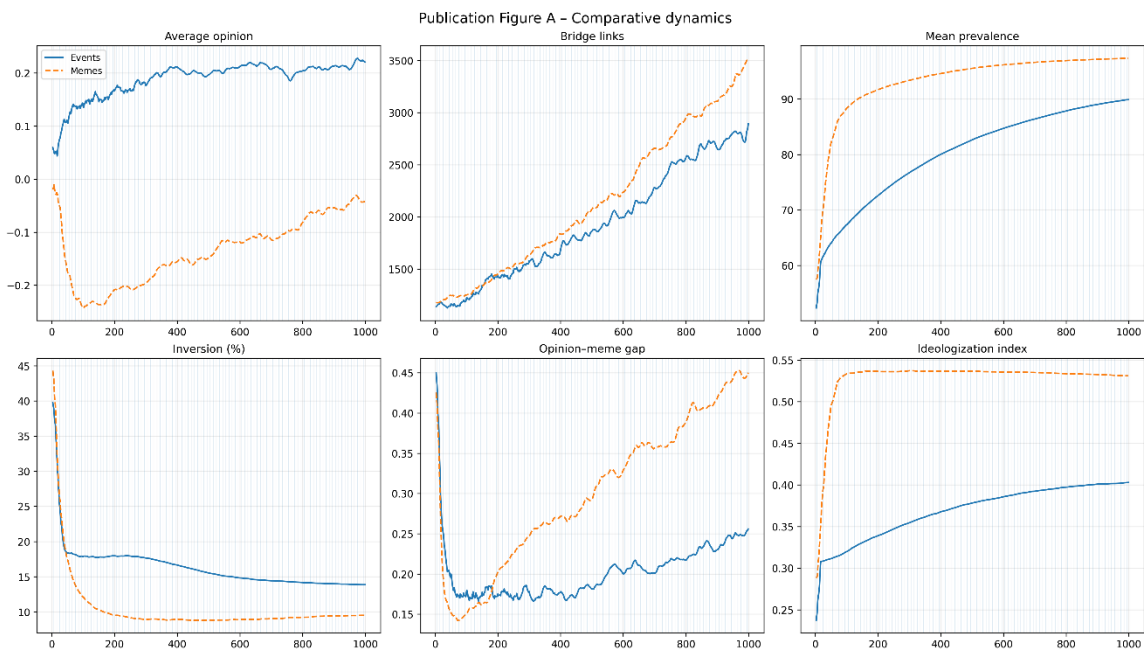
Pulse schedule marked at ticks: 5, 15, 25, ... up to 995

Last aligned tick used for summary: 999

Final aligned values:

- Average opinion: events=0.2159, memes=-0.0427
- Bridge links: events=2970, memes=3543
- Mean prevalence: events=89.89, memes=97.33
- Inversion %: events=13.87, memes=9.50

Figure A — Comparative dynamics under periodic forcing



This multi-panel figure contrasts system-level observables under two regimes:

- periodic exogenous events (solid line)
- periodic meme injections (dashed line)

Key methodological features:

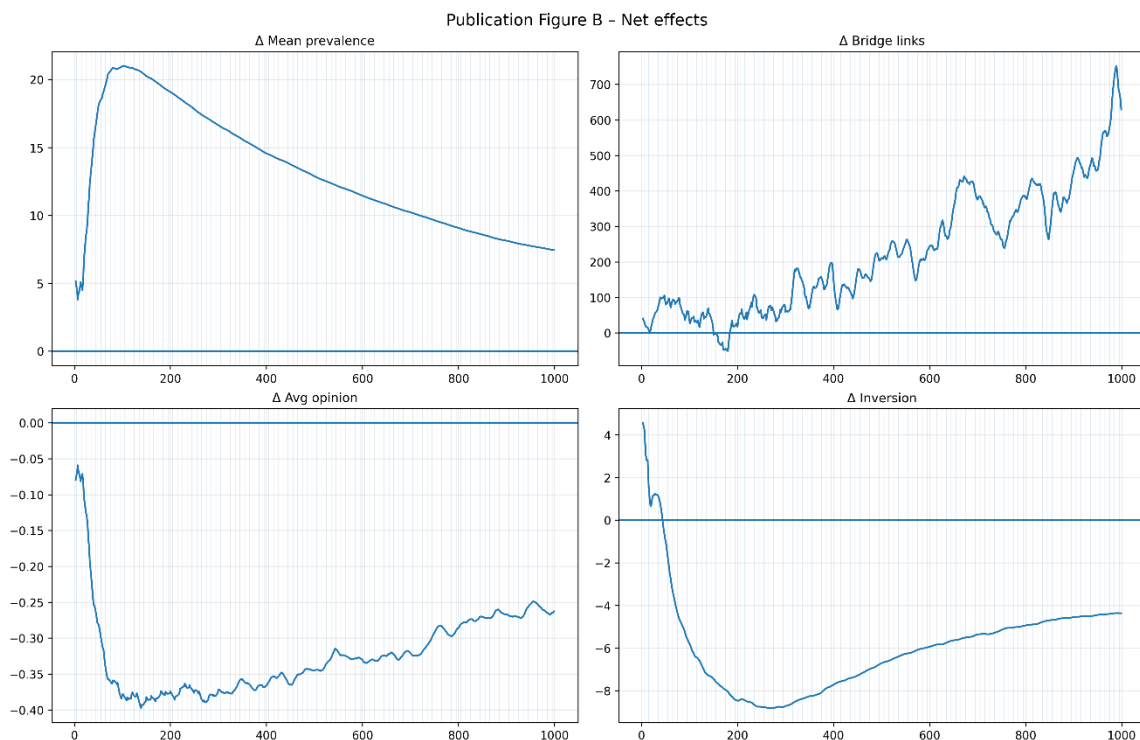
- temporal alignment across 1000 ticks
- smoothing (moving average, window = 11) to reveal structural trends
- vertical lines marking periodic interventions (ticks 5 + 10n)

Main observations:

- Mean prevalence is systematically higher under meme injection
- Bridge links increase significantly → structural connectivity gain
- Inversion rate decreases → reduced instability
- Opinion–meme gap shows persistent contraction

Interpretation: meme injection operates as a deep structural driver, not a surface perturbation.

Figure B — Net effect (memes – events)



This figure isolates the causal contribution of the cognitive layer.

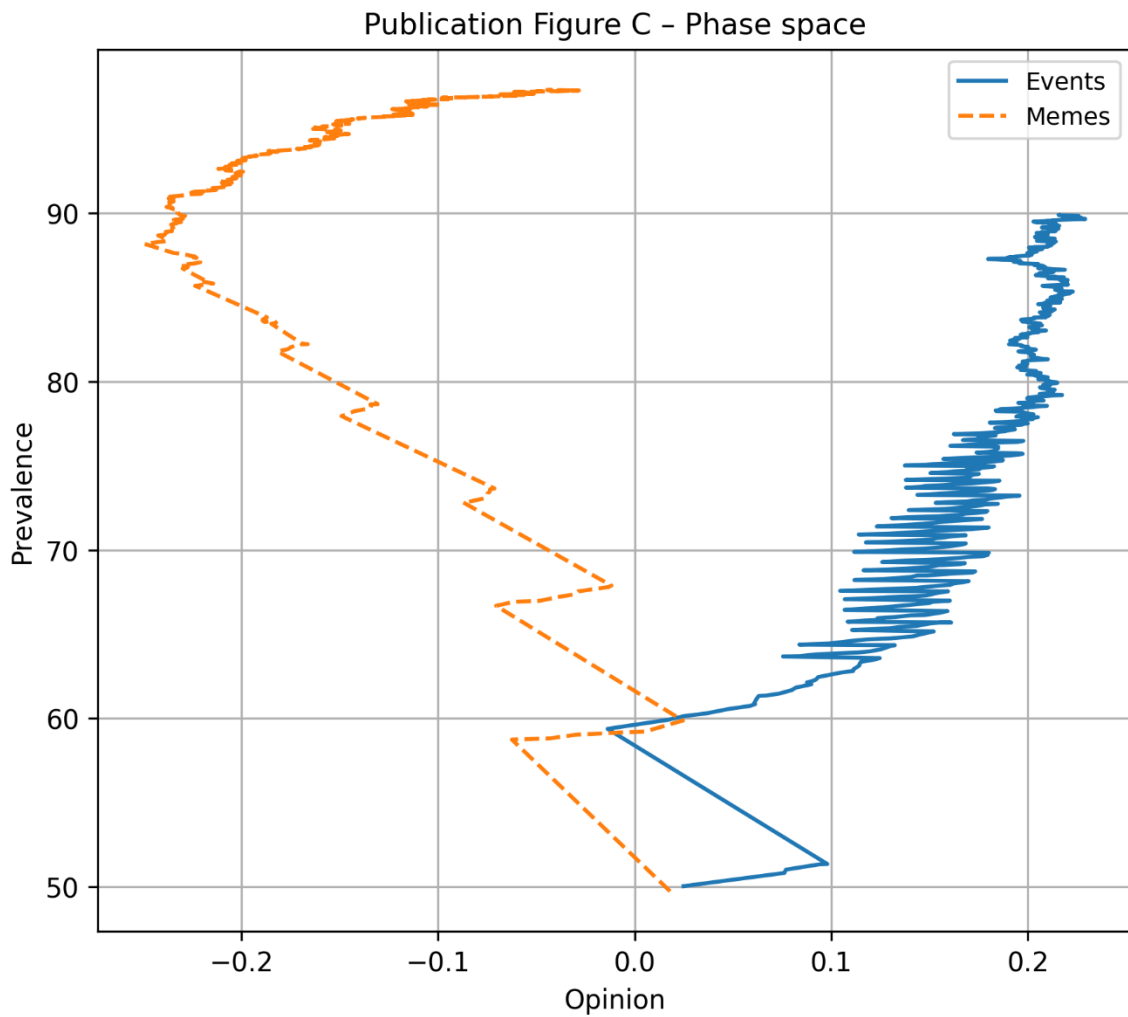
Key results:

- Positive Δ in:

- prevalence
- bridge links
- Negative Δ in:
 - inversion
- Non-trivial shifts in opinion baseline

👉 This confirms a systematic regime shift, not stochastic variation.

Figure C — Phase-space trajectory



Projection in the space:

(average opinion, mean prevalence)

Observations:

- Events: trajectory remains confined
- Memes: trajectory explores new regions of state space

This is direct evidence of:

- attractor displacement
 - expansion of accessible state space
 - structural reconfiguration of dynamics
-

6. Interpretation within Chuang's framework

6.1 Modification of the update function

In Chuang's formulation:

$$\Delta a_{i,t} = \alpha_i \cdot \text{agg} \left(g(a_{i,t}, m_{j,t}) \right)$$

The meme layer affects:

1. Message function

$$m_{j,t} = f_{\text{message}}(a_{j,t})$$

→ becomes:

- mediated
- structured
- non-linear

2. Social influence function (g)

Meme injection alters:

- similarity bias → becomes semantic
- reinforcement → becomes symbolic

- assimilation → becomes mediated by representation

3. Aggregation structure

Memes introduce:

- clustering effects
- long-range propagation
- non-local influence

6.2 Emergence of a meta-layer

Thus, the system becomes:

$$\Delta a_{i,t} = f_{\text{update}}(a_{i,t}, M_{i,t}, \mathcal{M})$$

where $(\mathcal{M}) = \text{memelayer}$.

This transforms ABMs into:

multi-layer dynamical systems

7. Conceptual Implications

7.1 From state dynamics to rule dynamics

- Events → act on states
- Memes → act on rules

This corresponds to:

Level	Events	Memes
Dynamics	state change	rule transformation
Memory	none	persistent
Effect	transient	structural

7.2 Attractor transformation

The inductive layer:

- shifts attractors
- reshapes basins of attraction
- enables new regimes

This is absent in standard deductive ABMs.

7.3 Resolution of a limitation in Chuang's paper

Chuang notes that:

different ABMs can produce identical macro-level distributions

Our results explain why:

Because the **same deductive structure** can generate different outcomes depending on the **inductive layer**.

8. Toward a unified theory of ABMs

We propose extending the standard framework:

Classical:

$$ABM = (f_{\text{update}}, f_{\text{select}}, f_{\text{message}})$$

Extended:

$$ABM = (f_{\text{update}}, f_{\text{select}}, f_{\text{message}}, \mathcal{I})$$

where:

- $(\mathcal{I}) = \text{inductivelayer}$

9. Conclusion

This study demonstrates that:

The inductive layer is not a secondary empirical refinement, but a **primary structural driver of system dynamics**.

Specifically:

- Events produce **transient perturbations**
- Memes produce **structural transformations**

This leads to a fundamental reconceptualization:

Opinion dynamics should be modeled as a **co-evolution between deductive rules and inductive representations**.

10. References (APA)

Chuang, Y.-S., & Rogers, T. T. (2022). *Computational agent-based models in opinion dynamics: A survey on social simulations and empirical studies*.

Cotnoir, P.-A. (2025). *Technosphere*, Creative Commons CC0 license.

Cotnoir, P.-A. (2026). *Cognitive Layer Activation in Opinion Dynamics: Memes as Cultural Attractors and Dissipative Structures*.

DeGroot, M. H. (1974). *Reaching a consensus*. *Journal of the American Statistical Association*, 69(345), 118–121.

Flache, A., et al. (2017). *Models of social influence: Towards the next frontiers*. *Journal of Artificial Societies and Social Simulation*, 20(4).

Hegselmann, R., & Krause, U. (2002). *Opinion dynamics and bounded confidence*. *Journal of Artificial Societies and Social Simulation*.

Madsen, J. K., et al. (2018). *Echo chambers and Bayesian updating*. PLoS ONE.

Baumann, F., et al. (2020). *Modeling opinion dynamics*. *Physical Review Letters*.

Queiros-Condé, D., Chaline, J., & Brissaud, I. (2023). *L'entropie créatrice: Thermodynamique fractale et quantique de l'Univers, de la Vie et des Sociétés*. Ellipses. (moliere.com).

Configuration Parameters	Meme injections (inductive layer)	Events (deductive forcing)	
try=1	last_tick=1000	last_tick=1000	
pop		500	500
nb_try		1	1
max_iter		1000	1000
threshold		50,01	50,01
cumulative	true	true	
refresh	false	false	
output	None	None	
locale-format	FR	FR	
csv-basename	Net_echo-chambers_meme	Net_echo-chambers	
csv-mode	Statistics	Statistics	
csv-values-start		1	1
csv-values-step		1	1
network	true	true	
link-removal-threshold		0,05	0,05
link-formation-threshold		0,3	0,3
prob		0,9	0,9
linksdown		2	2
linksup		12	12
bridge-prob		0,1	0,1
show-links	false	false	
linktick		0,2	0,2
polarization-factor		0,06	0,06
prevalence-weight		1,2	1,2
adoption-floor		0,04	0,04
noise		0,1	0,1
mode_prev	false	false	
rate-mod		0,4	0,4
rate-infl		0,01	0,01
group-impact-mode	all	all	
group-k		10	10
group-impact-weight		0,41	0,41
group-impact-alpha		1,2	1,2
reward-step		0,3	0,3
reward-cap		0,85	0,85
reward-scope	both	both	
reward-prev-delta		5	5
reward-decay		0,003	0,003
meta-ok	true	true	
meta-mode	Percent	Percent	
meta-influencers-selection	None	None	

meta-influencers		25	25
prev-low		60	60
prev-high		100	100
meta-min		4	4
meta-max		10	10
meta-links		4	4
meta-type-definition	structural/dynamic/none	structural/dynamic/none	
metablock	true	true	
vary-influence	true	true	
auto_event	false	true	
repeat_event	false	true	
event-init		5	5
event-pace		10	10
event-prob-max		0,5	0,5
event_size		0,6	0,6
prev_change		0	0
meme_set	false	false	
to_left	true	true	
low_meme		0	0
high_meme		0,6	0,6
low-prev		0	0
high-prev		60	60
use-memes?	true	true	
meme-max		120	120
meme-gain		0,8	0,8
meme-anti-leak		0	0
meme-decay		5,00E-05	5,00E-05
meme-weight-mean		1	1
meme-weight-sd		0,1	0,1
meme-weight-min		1	1
meme-weight-max		5	5
auto_inject?	true	true	
repeat-inject?	true	false	
inject-metas-only	false	false	
inject-tick		1005	10
inject-pace		10	10
inject-sign	minus	minus	
inject-amount		100	100
inject-weight		2	2
inject-prob-max		0,5	0,5
inject-low_meme		0	0
inject-high_meme		0,6	0,6
inject-low-prev		0	0

inject-high-prev	60	60
c-opinion-extreme	0,6	0,6
c-opinion-moderate	0,2	0,2
c-prevalence-high	50	50
c-prevalence-low	30	30